

METHODS OF APPLICATION



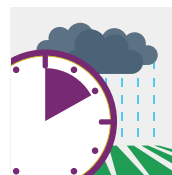
**Foliar Fertiliser to
Spray onto the
Crop Leaf**



Manual Application



Machine Application



Rain Safe in 2 hours

Application rate is a guide only, use product dilution rate from the table to work out litres of product needed to make the volume of spray that suits your crop.

Specific Rates

L/ha= your specific water rate in L over Dilution rate e.g. for cereals if water rate is 500 then L/ha=500 / 200=2.5L/ha

Crop Type	Product Dilution Rate	Application Rate (Litres/hectare)	Note : 2-3 weeks is required before foliar application can be repeated
Wheat (all cereals)	200X	4 - 6 Litres/hectare (L/ha)	
Canola	60X	4 - 6 Litres/hectare (L/ha)	
Pasture, Hay, Fodder crops	200X	4 - 6 Litres/hectare (L/ha)	
Fruit trees and nuts	300X	4 - 6 Litres/hectare (L/ha)	
Vegetables	300X	4 - 6 Litres/hectare (L/ha)	
Tea, Coffee, Cacao	400X	4 - 6 Litres/hectare (L/ha)	
Flowers	600X	4 - 6 Litres/hectare (L/ha)	

Recommended Timings

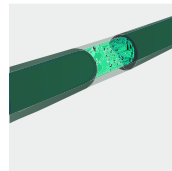
Crop Type	Number of Applications		Timing for Application
	Minimum	Preferred	
Wheat (all Cereals)	1	to 2 times	Good canopy formation into grain filling (avoid anthesis)
Corn	1	to 2 times	Good canopy formation into grain filling (avoid silking)
Canola	1	to 2 times	Good ground cover to early flowering
Dryland Pasture	1	to 2 times	Good ground cover after each grazing in winter or early spring
Hay	1	to 2 times	Good ground cover when shut for hay or silage
Fodder Crops (oats, millet, sorghum, turnip and other forage brassicas)	1	to 2 times	Good ground cover and after each grazing when re-growth is expected
Fruit trees and vegetables	1	to 2 times	Pre-flowering and when required
Flowers	1	to 2 times	Pre-flowering and when required
Tea, Cacao, Coffee	1	to 2 times	Pre-flowering and when required



**Fertigation
via Irrigation or
Sprinkler Systems**



Manual Application



Irrigation Systems



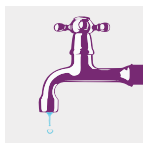
Watering Systems

Water Rate (L/ha)	10,000 minimum water rate
Boron Plus (L/ha)	5 to 10

HOW TO MIX



**Shake
Vigorously**



**Mix
with Water**



**Mix with
other Chemicals**



PRODUCT COMPATIBILITY + JAR TESTING

DO NOT mix with alkaline copper fungicides or inoculants. If unsure about compatibility, we recommend a simple jar test of products. Mix together and check if reaction occurs.

PRECAUTIONS

Non-toxic product. Avoid unneeded contact. Keep out of the reach of children. If contact is made with eyes, immediately rinse with plenty of water. If swallowed, seek medical attention.

ANALYSIS AND PRODUCT ASSURANCE

RLF

Australian-owned Formulator, Manufacturer and Supplier of High-analysis Broad-spectrum Liquid Fertiliser technologies. For over 25 years RLF's products have been used by millions of farmers and growers world-wide. ISO 9001 Quality Assured Company since 1998.



MACRO NUTRIENTS

Boron (B)

MICRO NUTRIENTS

As Boric Acid (H₂BO₃)



Member Login

Please login to be able to view this detail



Not a member yet?
[Register Here](#)

[LOG IN](#)