

THE ASCENDENCY OF PASTURE PLUS IN 2014

RLF's 'grazing game-changer' !



INTRODUCTION

During 2014 information was collected about the noticeably beneficial results pastoralists and graziers were receiving through the use of RLF's product Pasture Plus on their feed paddocks and grazing lands.

Greg Kaynes, Area Sales Manager NNSW/QLD and Ross Coleman Manager SA both undertook managed trials and measurement programs during the year and their observations and results of the beneficial gains made by **Pasture Plus** recorded. Each program was published and released as an RLF Insight.

In this **SPECIAL REPORT** we seek to reflect upon these experiences, promote the direction and importance of this product for the grazing industry, and to capture some of the highlights of a year in the life of **Pasture Plus**.

In this **SPECIAL REPORT** you will find :

Introduction	1
A Quick Recap	2
- the South Australian experience	2
- the New South Wales experience	4
Understanding Pasture Plus	6
- why it was developed	6
- what it is	7
- what it contains	7
- how to apply	8
- how to handle	8
- additional technical support	9
Highlighting our Client Stories	10
- '439% return in 90 days'	10
- from the Archive – RLF Insights and queries	11
Moving Forward into 2015	12
- exciting new trials – the developing stories	12
- exciting new results expected 2015	15
- exciting new market	15
Interested?	16
Conclusion and Contacts	18

A QUICK RECAP

The South Australian Experience

- On 6th May 2014 IN40 titled '**For Years, Pasture Plus Has Performed So Well For Our Clients**' by Ross Coleman was released

This Insight comments broadly on the value of **Pasture Plus**, over a number of years, for many of RLF's South Australian clients. Ross listed three main performance attributes as being :

1. high level of phosphate for improved plant and root energy turnover,
2. removal levels of all trace elements critical for pastures and animal health,
3. high level of chelation for efficient plant uptake and transport.

The following excavated grass and clover samples taken from the pasture show two things :



GROWTH and VIGOUR



GROWTH and VIGOUR

The samples from the paddock sprayed with **Pasture Plus** feature on the right hand side of each photograph and show significantly improved **growth** and significantly improved **general vigour**.

The **Pasture Plus** samples also show darker soil in close proximity to the roots, and this is further evidence that **Pasture Plus** has a significant influence on the plant's rhizosphere. It instigates a chain reaction that results in increased root resistance to disease, better availability of elements such as phosphate and essential trace elements, as well as adding to the build-up of rhizosphere humus.

In the photo that follows Ross explains how this improved growth and general vigour culminates in overall significant improvement in grazing pasture and hay crop production – both in terms of yield and feed quality.

This visual shows RLF's client's paddock on the left of the tree line, ten days after being sprayed with **Pasture Plus**.

The neighbour's paddock on the right is not performing to anywhere near the same level of productivity as is our clients – which was sprayed with **Pasture Plus**.



Ross went on to say, that the most important factor for our clients who use **Pasture Plus** as part of their regular fertilising routines for their feed paddocks, is that a stronger, and more productive pasture provides real opportunities for significant financial benefit from their animal production enterprises.

Over the years our clients have observed and commented on a range of benefits such as :

- generally healthier animals,
- improved weight gain,
- improved milk production,
- improved wool production and quality of clip,
- improved fertility,
- reduced hoof problems

The full edition of IN41 can be accessed at www.ruralliquidfertilisers.com.



The New South Wales Experiences

- On 1st September 2014 IN51 titled '**The Tale of Two Paddocks**' by Greg Kaynes was released.

This Insight highlighted a small but interesting trial conducted on the pastoral properties of two of his clients in New South Wales. It is fascinating reading as Greg compares the results of the unsprayed pasture with that sprayed with **Pasture Plus**.

It is examined in quite some detail.

The two paddock inspections were performed with a Digital Plate Meter. The plate is placed on the pasture and based on grass height takes a reading, providing the average dry matter per hectare. The beneficial results were outstanding.

Greg's first client, grazier Paul Mabbott of Kentucky NSW, sprayed 1.5 litres of Pasture Plus over an area size of 4,940-acres.

He recorded a 19.97% increase, or a return of \$59.91 per ha (based on feed at \$300 per tonne).

The measurements and statistics from his paddock are as follows :



Paddock Result	
Start Date	30-Jul-14
Result Date	22-Aug-14
Number of days after spraying	24
Dry Matter (beginning)	966-kg/ha
Dry Matter on Sprayed Area (result)	1159-kg/ha
Dry Matter on Unsprayed Area	892-kg/ha
Beneficial Result	193-kg/ha increase

\$59.91
per/ha return 


or

19.97%
Increase 

Greg's second client, grazier Rob Mulligan of Walcha NSW, sprayed 3 litres of **Pasture Plus** over an area size of 5,000-acres. He recorded a **28.0% increase**, or a return of \$84.30 per ha (based on feed at \$300 per tonne).

His paddock measurements are as follows :

Paddock Result	
Start Date	6-Aug-14
Result Date	22-Aug-14
Number of days after spraying	18
Dry Matter (beginning)	995-kg/ha
Dry Matter on Sprayed Area (result)	1421-kg/ha
Dry Matter on Unsprayed Area	1181-kg/ha
Beneficial Result	426-kg/ha increase

\$84.30
per/ha return 

or

28%
Increase 

The Insight gives a breakdown of the real costs involved for both of the graziers. The full edition of IN51 can be accessed at www.ruralliquidfertilisers.com.

- On 30th September 2014 IN53 titled '**The Continuing Story of Pasture Plus**' by Greg Kaynes was released.

As the title implies, this Insight continues the unfolding **Pasture Plus** story and features a small trial conducted by Greg with another of his clients.

The images show the samples taken from the ground at the varying application rates.



Greg reported the following set of general observations :

- All samples being from the same paddock with 75mm of rain having fallen over the preceding fortnight after a long period of extreme dry.
- All samples showed significant signs of new root growth development.
- The zero treated sample had dirt shake and wash off considerably easier than the samples at 1.5lt and 3.0lt applications.
- The zero treated sample does not look as robust as the other two. It has a considerably lighter colour than the sprayed samples, and generally its roots do not look to be displaying the same vigour as the two sprayed samples.
- The 1.5lt treated sample is slightly darker in colour around the roots than the untreated sample.
- The 3.0lt treated sample is considerably darker in colour around the roots than both the zero and 1.5lt samples.
- Both the 3.0lt and 1.5lt samples actually had worms in them (and these can be seen in the photographs).

The full edition of IN53 can be accessed at www.ruralliquidfertilisers.com.

UNDERSTANDING PASTURE PLUS

Why it was developed

Pasture Plus as a high-analysis, phosphorous and trace element rich compound liquid fertiliser, was specifically designed for animal carrying pastures and hay crops.

It is formulated to improve the volume of more palatable and more nutritionally balanced pasture and/or feed.

It is considered that trace elements are most often the limiting factor in pasture fertiliser programs, and that this can lead to animal deficiencies.



Pasture



Nutrient Delivery System

– For Pasture Crops

Therefore, **nutritionally balanced pasture and feed crops** will translate to :

- improvements in root development,
- feed volume,
- feed palatability,
- stacking rates,
- length of growing season,
- insect resistance,
- disease resistance,
- seed set and carry-over benefit to the crop that follows.



– For Animal Stock

The benefits of producing more nutritionally balanced feed and pasture for stock can have a wide-range of value-added outcomes. It could be expected that potential revenue increases from animal production could be achieved through, for example :

- reduced need for feed supplements,
- reduced veterinary expenses,
- improved birth rates,
- lower mortality,
- improved weight gain,
- improved wool clip,
- higher quality and improved milk production.

This list of benefits is not exhaustive and every pastoralist and grazier will have different requirements and crop outcome needs. But, the 'yield' evidence is building towards advantageous outcomes, such as those listed above.

This nutritionally balanced product has the right pH, buffering capacity and wetter to effectively enter the leaves within a short time span for speedy uptake and utilisation by the pasture or feed crop.

'They are what they eat' – an old enough adage – but this nutritionally balanced pasture is now a proven critical factor in establishing and maintaining a stronger and healthier feeding platform for your animals.



What it is

Pasture Plus is a CROP-SPECIFIC FOLIAR fertiliser spray with NDS (a Nutrient Delivery System) that increases the efficiency in product uptake through the leaf by up to 350%. Much has been written about RLF's revolutionary NDS and more information on this revolutionary function can be gathered from our global website www.ruralliquidfertilisers.com.

With NDS **Pasture Plus** delivers 12 essential nutrients contained in a HBS (a High-analysis Broad-spectrum Solution). These essential nutrients are formulated specifically for this crop type.

Pasture Plus provides the plant with an optimum balance of essential nutrients to ensure soil nutrient variability and deficiency is fixed. As a consequence **Pasture Plus** gives greater plant protection, more growth and improved yield qualities.

This is done by using just one product that delivers 12 essential nutrients 'tailor-made' to suit the food and/or paddock crop.



Pasture Plus

What it contains



Pasture Plus contains the following nutrients :

N **Nitrogen** — is essential for plant growth and is part of every living cell. It plays many roles in plants and is necessary for chlorophyll synthesis.

P **Phosphorus** — is essential for plant growth.

K **Potassium** — is vital to photosynthesis, protein synthesis and many other functions in plants.

Mg **Magnesium** — making the nutrient actively involved in photosynthesis. It also aids in phosphate metabolism, plant respiration and the activation of many enzyme seasons.

S **Sulphur** — is a part of every living cell and is a constituent of two of the 20 amino acids that form proteins.

Zn **Zinc** — improves disease resistance, heals wounds quickly and prevents cracked hooves. It reduces skin lesions and improves growth and appetite, fertility and reproduction.

Cu **Copper** — is essential for the utilisation of calcium for bone development, increases fertility, reduces disease and scouring, improves growth and pigmentation.

Mn **Manganese** — reduces skeletal abnormality, improves fertility and prevents abortion and stillbirth.

Fe **Iron** — reduces anemia, improves growth and prevents anorexia.

B **Boron** — essential for healthy clover production, pasture palatability and to help plants utilise nitrogen. Good levels help suppress bloat.

Co **Cobalt** — essential for the micro-organism activity in the animals rumen, and an essential component of vitamin B12.

Mo **Molybdenum** — essential for nodulation on legumes, and low levels will inhibit pasture production.

How to apply

Use the following table as a guide for the application of **Pasture Plus** :

Pasture Type	Litres / ha / application	No. of applications per year	Application Timing	Minimum Water Rate
Dairy pastures	3-4	3	After grazing or cutting when ground cover is established	60 L
Irrigated pastures	3-4	4	After grazing or cutting when ground cover is established	60 L
Irrigated Lucerne or hay production	3-4	4	After grazing or cutting when ground cover is established	60 L
Dry land and less productive pastures	2-3	1-2	After grazing or cutting when ground cover is established	60 L

Wetter Rates Recommended

Pasture Plus include a surfactant (wetter) at a rate of 0.1% V/V

Application	% of Manufacturers Recommended Rate
Stand alone application of Pasture Plus	20%
Pasture Plus product tank mixed with other chemicals not containing a wetting agent	20%
Pasture Plus product tank mixed with other chemicals that do contain a wetting agent	NO additional wetter

How to Handle

Pasture Plus is tank mix compatible with most liquid herbicides, fungicides and insecticides (but it is always recommended that you check with RLF prior to mixing if uncertain).

- For boom spray or mister dilution, the recommended water rates are 25:1 to 50:1.
- For aerial application, the water rate should not be less than 20L/ha. and should be applied in morning dew conditions.



Spraying Pasture Plus on 'Salway' an RLF client property in NSW

Additional Technical Support

There is more technical information available on the website, amongst which you will find :

- Nutrient Removal by Field Crops and Pasture Plants**

released 23/07/2014

TB48



This Technical Bulletin provides a comprehensive chart of nutrient removal information and values for all pasture and field crops. Major elements are given as per kg/tonne of dry matter with trace elements given as per gram/tonne. It is supported by references and further reading.

[Click Here](#)

- Useful Guidelines for the use of RLF Foliar Products**

released 02/12/2013

TB47



This Technical Bulletin provides important information and general guidelines for the use of RLF foliar products. It discusses issues such as water (carrier) rates, mixing of supplements and chemicals, guides for winter and summer applications, aerial spraying and wetter requirements.

[Click Here](#)

- Pasture Plus**

released 30/05/2006

TB82



This Technical Bulletin gives an understanding of how Pasture Plus performs as a foliar fertiliser. It also provides an elemental analysis for this pasture product.

[Click Here](#)

- Managing Crop Trace Element Requirements**

released 10/09/2002

TB106



This Technical Bulletin discusses the management of trace elements in crops and provides information for an integrated soil, seed and foliar program.

[Click Here](#)

- Oaten Hay Requirements**

released 27/03/2002

TB103



This Technical Bulletin discusses oaten hay production. It provides a comparative nutrient analysis that is representative of oaten hay, and information outlining the benefits of a foliar spraying program.

[Click Here](#)

- Dairy Pasture Foliar Program for Dry Seasons**

released 02/09/1997

TB33



This Technical Bulletin discusses the importance of maintaining a Dairy Pasture Foliar Program for dry seasons.

[Click Here](#)

Material Safety Data Sheet

This important document provides all the safety information you need to know and is available at www.ruralliquidfertilisers.com.

HIGHLIGHTING OUR CLIENT STORIES

● '439% Return in 90 days for Pasture Plus – Amazing Return of Investment'

Dan Hunt, farmer of Moonganna NSW trialled **Pasture Plus** on his 810-ha property in August – September 2014. The size of the plot trialled was 40-ha.

This is his story (as it appears on RLF's global website) :

"We applied **Pasture Plus** in early August 2014 to 20-ha of pasture that was sewn down with 50kgs per hectare of OATS.

The **Pasture Plus** was applied at the rate of 2-lt per hectare.

We ran 45 heifers and steers from the time of spraying (early August) through to the end of October, on the **Pasture Plus** treated paddocks. Normally at this time of the year, and on these paddocks, we average 1.2kgs weight gain per day. Knowing that 2014 had been one of the driest years on record, we weighed the cattle off at the end of October and were absolutely delighted to see that the cattle had average 1.78kg's weight gain per day.

This was an increase of 48% over our previous average.

This is an amazing return for us. We invested \$28per hectare in the **Pasture Plus** foliar and spraying costs, and in return we earned an additional \$123 per hectare in just 3 months.

I must say that initially I was sceptical that the product would work as Greg (RLF's Area Manager) had said it would. What I have seen since applying the **Pasture Plus** has amazed me. My father and I had seen a visible improvement in the crop within 4 days of spraying. I have seen huge root growth development, massive increase in yield and the quality of the feed, as we can see from the weight gain, has improved dramatically.

We will continue to use **Pasture Plus** in our operations."

[There are many more Testimonials and Case Studies on the global website www.ruralliquidfertilisers.com that attest to the attributes and outcomes for our clients of **Pasture Plus**, and other Crop-Specific Foliars and RLF specialised products too.]



Dan Hunt



From the Archive – RLF Insights and Queries

Over a long period of time our clients, team members and distributors (to name just a few) have written about **Pasture Plus**. The Insights below are provided for your further information and interest. They provide a point of reference and are testament to the many successes that **Pasture Plus** has brought and to some of the unique questions asked by farmers and growers. But more than anything else, they highlight the role that **Pasture Plus** has played over many years. Simply click on the icon to read the full RLF Insight.

• Show them the way

IN02



At the core of our **Pasture Plus** 'message' are the financial benefits from giving pastures a little tender loving care. Last season's (non-budgeted) hand feeding and supplement costs will no doubt cause many to prick their ears up to this stark piece of financial reality. **Pasture Plus** DOES, and WILL, increase pasture dry matter (DM) production. Our customers need to make money – we are very conscious of that important fact. The more DM they grow – the more money they make. RLF shows the way !

[Click Here](#)

• To Mix or Not to Mix

IN47



Dr Hooshang Nassery responds to the following questions : "Graziers in the New England area traditionally apply 100kg UREA (46kg N) ha/pa. Many are now enquiring whether they can mix UREA with RLF's **Pasture Plus**. Their questions include : – will UREA be better utilised when applied as a foliar ? – do they still require 100kg/ha of UREA or can this amount be dramatically reduced ? – are there dangers to pastures when applying UREA as a foliar ? – does RLF have a template advising them how much UREA to mix with RLF **Pasture Plus** ?

[Click Here](#)

• Less is more

IN54



Distributors in the New England area are now on the liquid fertiliser bandwagon, with many recommending Pasture Foliars with a pH of around 7. The question answered by Dr Hooshang Nassery is – will foliars with a neutral pH be as effective as the RLF products ?

[Click Here](#)

• Too Little, Too Much

IN46



Another from the series 'Ask the Doctor'. "Dear Hooshang, what is the optimal % of organic matter in soil ? What are some of the hazards with too little / too much organic matter as a % in the soil ?" Dr Nassery answers these questions.

[Click Here](#)

• Results just Tur-rific!

IN31



Profiling an irrigated, 'Kikuyu' turf operator, in South Australia's Murraylands area who was having difficulty finding enough 'quality' turf to harvest for sale due to poor, patchy growth. With RLF Plant Physiologist Dr Hooshang Nassery's input, their irrigation and fertiliser practices were changed. See the benefits of using **Pasture Plus** in this Insight.

[Click Here](#)

• Foliar Fertiliser v Soil Fertiliser

IN41



This Insight shows comparison of Foliar Fertiliser to Soil Fertiliser and what is essential to know when choosing what type of fertiliser will best suit crops. An easy to read comparison chart of features.

[Click Here](#)

MOVING FORWARD INTO 2015

Exciting New Trials – The Developing Stories

RLF is committed to compiling data and building a body of evidence that supports the results that are so clearly being achieved through the use of **Pasture Plus** by a wide variety of our clients today.

This is a clear objective for the company.

In many ways, 2014 has been an exciting year of growth and measurement for Pasture Plus, even though our clients have been using it with great success for several years. And, it is hoped that farmers and growers, as they embrace fertiliser/regime change in pursuit of more modern farming practice, will take inspiration and encouragement from the experiences and information that this report contains.

It is afterall a good story to tell, because the gains in terms of the health and well-being of animal stock, plus the health and wealth gains to any business's bottom line cannot be denied.

The following two Trials form part of RLF's determination to show the benefits of its product, and we thank the property owners for partnering with us.

● The Bald Hill Experimental Site

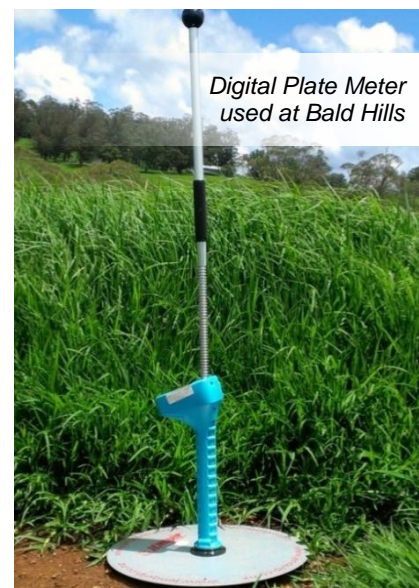
The graph and statistics that follow are from a trial currently being managed by Greg Kaynes (Area Sales Manager NNSW/SQLD).

It is being conducted on a property – **Bald Hills** – located in the Ebor region of NSW on top of the escarpment between Armidale and Coffs Harbour. The property of 4,000-acres is arguably the best grazing country in Australia and the Turnbull family has been operating Bald Hills since the late 1800's. Their business is purely beef cattle.

The methodology Greg employs involves using a digital plate meter to sample and measure from two areas specially marked in the paddock. One area is a sprayed area with **Pasture Plus** – the other area is a non-sprayed area of the same size.

For consistency purposes, he ensures he measures the same area every time.

Greg has listed several key points to note about this trial, and they are as follows :



- Between the 12th September 2014 and the 21st November 2014, the region had received less than half the average rainfall. 2014 was the driest year on record forcing 2013 to become the second driest year on record.
- The Grower stocked the paddock between 12th September 2014 and 26th September 2014 and kept stock in it until the 21st November 2014.
- During December 2014, the region received 257mm of rain – approx. 152% of average rainfall.



The chart plots the progress of the measurements.

The exact measurements and statistical gains are as follows :

Date	Sprayed (3Lt) + 10Lt UAN	Non Sprayed	Gain
12 September 2014	1592	1606	-14
26 September 2014	1858	1480	378 +26%
10 October 2014	1886	1396	490 +35%
29 October 2014	2012	1480	532 +36%
07 November 2014	2082	1494	588 +39%
21 November 2014	2194	1564	630 +40%
06 January 2015	4588	3300	1288 +39%

In interpreting the data (so far) we find that **Pasture Plus** has grown approximately 53.2kgs of herbage mass per day – whilst non treated pastures have grown 38.5kgs herbage mass per day.

This is an increase of 14.7kgs of herbage mass per day – or 38% – for cover on treated pastures.

**38%
Increase** 

This site is the subject of ongoing review and measurement as considerable rainfall has been recorded in the area in recent times (with 5+inches of rain over the Christmas holiday season alone). And the consequences of this rainfall has been an explosion of pasture growth.

So, this trial site is well worth watching into the future and RLF is pleased to be a partner in this venture.

● The Walcha Dairy Trial Site

The Walcha Dairy is an important part of the **Pasture Plus** story.

RLF has now completed a Feed Test analysis by an accredited laboratory on **Pasture Plus** – treated paddocks as opposed to non-treated paddocks from the Walcha Dairy. The results help support the observations that **Pasture Plus** has the demonstrable ability to increase Crude Protein in the range of 28% – 50%. Instances of **Pasture Plus** improving crude protein level in the New England region range from 28% to 50%.

The 28% demonstration is particularly useful, as it is the Walcha Dairy.


The Walcha Dairy annually applies 300kg Urea, which in itself builds up Crude Protein in the plant.

But, what our tests have demonstrated is that **Pasture Plus** can improve pasture even further.

**28%
Increase** 



The following table summarises the laboratory results :

	Date of sample collection – 20 November 2014 Date of sample analysis – 25 November 2014 Type of sample – Pasture, fresh <small>NOTE : Metabolisable Energy calculated using this equation ME=(0.203 x DOMD%) - 3.001</small>	
	Untreated	Treated (Pasture Plus)
 Dry Matter (%)	37	35.6
Moisture (%)	62.1	64.4
Crude Protein (% of dry matter)	16.8	21.6
Acid Detergent Fibre (% of dry matter)	33.6	32.5
Neutral Detergent Fibre (% of dry matter)	59.5	56.7
Digestibility (DMD) (% of dry matter)	66.5	72.1
Digestibility (DOMD) (Calculated) (% of dry matter)	63.2	67.9
Est. Metabolisable Energy (Calculated) (MJ/kg DM)	9.8	10.8

The following comments are given as a basis for interpreting the result of this analysis :

- For every 1kg additional crude protein you increase in the pasture, you increase live weight gain by 40% (ratio 1:1.4), reference recent studies by the MTT Agri-food Research Finland and Swedish University of Agricultural Sciences into the advantages of adding protein to the silage diets of cattle.
- Walcha Dairy (Rye Grass) showed 28% improvement in a high performance pasture which produces 6,000kg of dry matter per annum.

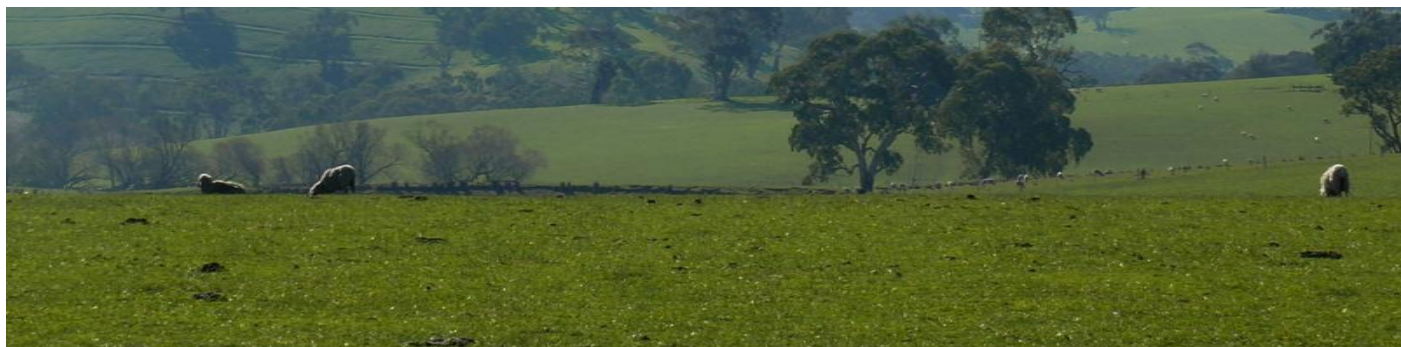
Therefore the following conclusions and calculations can be drawn :

- Dry Matter at 35.6%
- Dry Matter = 2,136kg dry matter per hectare
- Crude Protein before **Pasture Plus** 16.8% = 358.84kg Crude Protein per hectare
- Crude Protein after **Pasture Plus** 21.6% = 461.376kg Crude Protein per hectare
- Pasture Plus** provides an additional 102.536kg/ha more Crude Protein per hectare
- This translates to 143.55kg additional weight gain per hectare
- At AUD\$2.1/kg – an additional income of \$301.45 per hectare

\$301.45
equivalent additional
income per hectare



And, this data does not take into consideration the fact that Pasture Plus also produces an additional 30% more herbage mass – which is an obvious, value-adding outcome.



Exciting New Results expected 2015

A considerable number of trials and managed programs involving Pasture Plus have been conducted on the east coast of Australia in recent months. The outcomes of these trials are expected soon, and their results will all be released as soon as possible.

Over thirty different farming properties took part in this managed trial for feed and grazing crops and the outcomes are highly anticipated. Certainly, RLF's staff team are excited by the growth of the **Pasture Plus** plots and their potential for high yield and quality returns.

Pasture Plus is a 'grazing game-changer', and RLF is confident that each of these farming enterprises will embrace this product when presented with the beneficial and immediate crop outcomes and financial gains.

These results will be released at www.ruralliquidfertilisers.com as soon as they are analysed and reported.

So, watch this space – exciting new results are on their way !



Pasture Plus

Exciting New Market

A new marketplace for RLF is New Zealand, with its high dependence on pasture for the important sheep and dairy enterprises that underpin the stability and agricultural success of the country's economy.

RLF believes that **Pasture Plus** can be 'the grazing game-changer' for this market also.



But in reality **Pasture Plus** can be 'the grazing game-changer' for markets anywhere – wherever there is livestock and livelihoods that rely on healthy grazing lands to grow their businesses.

You too can be part of this future.

INTERESTED ?

If you are interested in partnering with RLF in a trial or testing **Pasture Plus** on your property, or simply wanting advice or information, you can contact your nearest RLF representative.

Managers are located in all States of Australia, and at several international locations.

Their details are listed as follows :

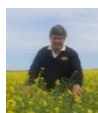


RLF Australia



Ross Coleman

Sales + Customer Service Group (SCG)
State Manager (SA)
Email: rcoleman@rlf.com.au
Mobile: 0427836733



Greg Elliot

Sales + Customer Services Group (SCG)
Field Operations Manger (WA)
Email: gelliot@rlf.com.au
Mobile: 0427811045



Greg Kaynes

Sales + Customer Service Group (SCG)
Area Sales Manager (NNSW / QLD)
Email: gkaynes@rlf.com.au
Mobile: 0428720199



Jared Siviour

Sales + Customer Service Group (SCG)
Area Representative (SA)
Email: Jsiviour@rlf.com.au
Mobile: 0438816005



Richard Stone

Sales + Customer Service Group (SCG)
Field Operations Manager (NSW)
Email: rstone@rlf.com.au
Mobile: 0429459208



Michael Taylor

Sales + Customer Service Group (SCG)
Area Representative (NSW)
Email: mtaylor@rlf.com.au
Mobile: 0417262422



RLF New Zealand



Jason Reid

Sales + Customer Service Group (SCG)
Director Element Raw Materials New Zealand
Email: jason@elementrm.co.nz
Mobile: + 64 21 156 1049
Telephone: + 64 3 3181 262
Address: 573 Halkett Road
RD1 Christchurch 7671
New Zealand



RLF Thailand



Saranratch (Pui) Tipparatnarapon

Sales + Customer Service Group (SCG)
Client Service Representative
Email: saranratch@rlfglobal.com
Mobile: + 66 895 559 991
Telephone: + 66 (0)2 104 9164
Address: 388 Exchange Tower,
29th Floor, Sukhumvit Road,
Klongtoey, Klongtoey,
Bangkok 10110



RLF China



Wang Lin Bao

Sales + Customer Service Group (SCG)
Sales Director
Email: wanglinbao@rlfchina.com.cn
Mobile: 13816823469



Gong An

Sales + Customer Service Group (SCG)
Sales Manager
Email: Gongan@rlfchina.com.cn
Mobile: 18689902055



Dong Fang

Sales + Customer Service Group (SCG)
Sales Manager
Email: dongfang@rlfchina.com.cn
Mobile: 18192210238



Li Jian Cai

Sales + Customer Service Group (SCG)
Sales Manager
Email: Lijiancai@rlfchina.com.cn
Mobile: 13699005618



Ma De Liang

Sales + Customer Service Group (SCG)
Sales Manager
Email: madeliang@rlfchina.com.cn
Mobile: 18565196639 / 13751719712



Che Fei

Sales + Customer Service Group (SCG)
Sales Manager
Email: Chefei@rlfchina.com.cn
Mobile: 18679141775



Dan Wang

Sales + Customer Service Group (SCG)
Sales Assistant
Email: huangchen@rlfchina.com.cn
Mobile: 15093498586 / 13621623970



Dong Qi Jun

Sales + Customer Service Group (SCG)
Sales Manager
Email: Dongqijun@rlfchina.com.cn
Mobile: 13973150096



Zhang Xue Kun

Sales + Customer Service Group (SCG)
Sales Manager
Email: zhangxuekun@rlfchina.com.cn
Mobile: 13708760855



Zhang Zhen Xing

Sales + Customer Service Group (SCG)
Sales Manager
Email: zhangzhenxing@rlfchina.com.cn
Mobile: 13589873505



Chen Min

Sales + Customer Service Group (SCG)
Sales Director
Email: chenmin@rlfchina.com.cn
Mobile: 13609010102



Fang Shi Xian

Sales + Customer Service Group (SCG)
Sales Manager
Email: fangshixian@rlfchina.com.cn
Mobile: 18877177724



Kang Guo Tong

Sales + Customer Service Group (SCG)
Sales Manager
Email: kangguotong@rlfchina.com.cn
Mobile: 15838321092 / 13621602980



Yin Yao Lin

Sales + Customer Service Group (SCG)
Sales Director
Email: yinyaolin@rlfchina.com.cn
Mobile: 13808613685



Liu Shi Jian

Sales + Customer Service Group (SCG)
Sales Manager
Email: liushijian@rlfchina.com.cn
Mobile: 18904316683



Mu Guang Rong

Sales + Customer Service Group (SCG)
Sales Manager
Email: muguangrong@rlfchina.com.cn
Mobile: 13625365058



Xu Jian You

Sales + Customer Service Group (SCG)
Sales Manager
Email: xujianyou@rlfchina.com.cn
Mobile: 15803829816



Xi Ju Qun

Sales + Customer Service Group (SCG)
Sales Director
Email: xijuqun@rlfchina.com.cn
Mobile: 13213244220 / 13621628105



Bai Yi Gen

Sales + Customer Service Group (SCG)
Sales Manager
Email: Baiyigen@rlfchina.com.cn
Mobile: 13667128486



Zhao Hai Long

Sales + Customer Service Group (SCG)
Sales Manager
Email: zhaohailong@rlfchina.com.cn
Mobile: 15117247798

CONCLUSION AND CONTACTS

What a great year 2014 has been for **Pasture Plus**.

And these are only some of the outcomes and achievements it has demonstrated during this time.

It is also an exciting time of growth for RLF as it seeks to spread its strong message of service and support for farmers and graziers – not only through **Pasture Plus** – but also its wider range of specialised products and services. It is only through the trust built between our staff team and clients that experimental data and trial results can be carried out and reported upon so effectively. But the beneficial outcomes and results, as identified by the experiences and experiments included in this report speak for themselves.

RLF is committed to the future of agriculture and primary production – in all its varying expressions and markets – and looks forward to 2015 with confidence.



by **Carol Phillips (Executive Consultant Communications and Media)**

Email: carol@rlfglobal.com

with contributions from Greg Kaynes (Area Sales Manager Northern NSW/Southern Queensland and Ross Coleman (Manager South Australia)



Contacts



Rural Liquid Fertilisers

Street Address: 61 Dowd Street, Welshpool WA 6106
Freecall: 1800 753 000
Telephone: +61 8 9334 8700



RLF Global Market

Global Distributor Contacts +
Country Distributor Enquiries: + 61 433 333 300



Grant Borgward
Sales + Customer Services Group (SCG)
National Sales Manager

gborgward@rlf.com.au



Gavin Ball
Corporate Group (CG)
Director - Global Markets

gball@rlf.com.au



Mathew Denton
Corporate Group (CG)
Commercial Manager Asia Pacific

mdenton@rlf.com.au