



## Rapid Foliar



**Rapid Max is an ionic form of zinc, copper and phosphorus and other essential nutrients all rapidly taken up by the plant**



Phosphorus



Copper



Zinc



Mg

**Rapid Max** is a focused specialty formulation that delivers high-performance zinc and copper with phosphorus. Also contained in Rapid Max is a supporting balance of sulphur, and magnesium. Rapid Max uses advanced rapid delivery system (RDS) technology.

**Rapid Max** uses an ionic form of zinc and copper to ensure rapid and improved uptake efficiency by the leaf. Rapid Max uses high-quality EDTA chelates to facilitate zinc and copper mobility in the plant when compared to oxide, sulphate and chelate foliar fertilisers. **Rapid Max** is phosphorus-based, providing fully available and some chelated inorganic phosphate in the immediate form required by the plant. It is then ready for use to achieve more yield with greater overall result.



Rapid Delivery System

### Benefits

The ionic form of zinc and copper used is rapidly taken up by the leaves and is rain-safe within hours. Rapid Max goes to work quickly and effectively.

The Rapid Max EDTA chelate components facilitate zinc and copper mobility and transport within the plant to ensure that the plant can utilise the zinc, copper and phosphorus as and where required.

When applied at 1/L per ha Rapid Max supplies enough zinc for 5t/ha of grain and enough copper for 10t/ha of grain. Rapid Max also supplies enough phosphorus for an extra 30kg of yield.

Rapid Max keeps the zinc and copper balance of the new growth.

The phosphate in Rapid Max stimulates metabolic reactions and increases the crop response beyond that of the trace element effect.

### Improve the Soil for Next Season

Rapid Max has a direct impact on increasing soil organic matter left after the season finishes. This is because Rapid Max has increased root mass and rhizosphere activity (root turnover/plant exudate/more microbial activity). Greater soil organic matter helps make soils softer for planting, reduces leaching and improves nutrient and humus availability for next season.

### Easy to Use

Rapid Max is a highly concentrated solution fertiliser with excellent handling capabilities.

Rapid Max can be mixed with several liquid nitrogen sources including Power N 26, Spray N 34 and Power N 42 (UAN). Rapid Max is also compatible with many crop protection products please refer to [rlfchemtest.com](http://rlfchemtest.com) for more information.

### No Comparison

When compared to other products Rapid Max gives you fast uptake (1-2 hours), greater nutrient availability, mobility and efficiency and can deliver better results meaning much higher satisfaction in field.

### New Generation

Rapid Max is the new generation in available zinc and copper nutrient products. Using the RLF developed RDS (Rapid Delivery System) has ensured that Rapid Max delivers zinc, copper and phosphorus to the plant faster and more effectively.

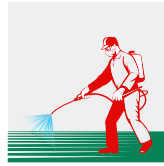
### Safe + Quick

Rapid Max is buffered at the correct low pH to deliver the safe and quick uptake of nutrients and eliminate leaf burn often experienced with the leaf application of other products.

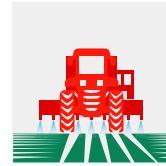
## METHODS OF APPLICATION



**Leaf Application**  
Spray on to the  
Crop Leaf



Manual Application



Machine Application



Rain Safe in 2 hours

## APPLICATION GUIDE

### Specific Rates

Crop Type	Dilution in Water		Application Rate per hectare
	Minimum	Maximum	
Fruit Trees	1L to 250L	1L to 400L	1 to 3 L/ha
Vegetables	1L to 250L	1L to 400L	1 to 3 L/ha
Grapes	1L to 250L	1L to 400L	1 to 3 L/ha
Cereal, Cotton, Tea	1L to 100L	1L to 200L	1 to 3 L/ha
Canola	1L to 100L	1L to 200L	1 to 3 L/ha
Sunflower	1L to 100L	1L to 200L	1 to 3 L/ha
Root Crops	1L to 100L	1L to 200L	1 to 3 L/ha
Rice	1L to 100L	1L to 200L	1 to 3 L/ha
Maize/Corn	1L to 100L	1L to 200L	1 to 3 L/ha

Rapid Max is formulated to be applied through 90-120 micron spray jets making Rapid Max ideal for application through large scale commercial spraying equipment including Self Propelled (SP) Sprayers and Boom Spray systems.

### Recommended Timings

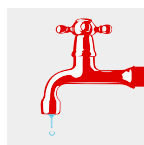
Crop Type	Number of Applications		1 week		3 wks		6 wks		10 wks		12 wks		14 wks	
	Minimum	Preferred	2-Leaf Stage	3-Leaf Stage (1)	Tillering	Mid-Tillering/ Mid-Growth Stage	Root/Tuber Bulking	Pre- flowering	Flowering Stage			Ripening Stage		
Fruit Trees	1 time	to 2 times												
Vegetables	1 time	to 2 times												
Grapes	1 time	to 2 times												
Cereal, Cotton, Tea	1 time	to 2 times												
Canola	1 time	to 3 times												
Sunflower	1 time	to 3 times												
Root Crops	1 time	to 2 times												
Rice	1 time	to 3 times												
Maize/Corn	1 time	to 3 times												

(1) 3 leaf stage in annuals or 3 new leaves formed on shoot tip in perennials

## HOW TO MIX



Shake  
Vigorously



Mix  
with Water



Mix with  
other Chemicals



### PRODUCT COMPATIBILITY + JAR TESTING

DO NOT mix with alkaline copper fungicides or inoculants. If you are unsure, we recommend a simple jar test of products. Mix together and check if reaction occurs.



### PRECAUTIONS

Non-toxic product. Avoid unneeded contact. Keep out of the reach of children. If contact is made with eyes, immediately rinse with plenty of water. If swallowed, seek medical attention.

## ANALYSIS AND PRODUCT ASSURANCE

RLF



Australian-owned Formulator, Manufacturer and Supplier of High-analysis Broad-spectrum Liquid Fertiliser technologies. For over 25 years RLF's products have been used by millions of farmers and growers world-wide. ISO 9001 Quality Assured Company since 1998.



### MACRO NUTRIENTS

Phosphorus (P)

Phosphorus ( $P_2O_5$ )

Sulphur (S)

Magnesium (Mg)

### MICRO NUTRIENTS

Zinc (Zn)

Copper (Cu)



### Member Login

Please login to be able to view this detail



Not a member yet?  
Register Here

LOG IN