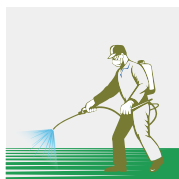


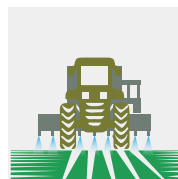
METHODS OF APPLICATION



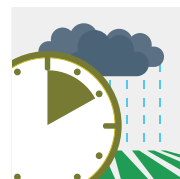
**Foliar Fertiliser to
Spray onto the
Crop Leaf**



Manual Application



Machine Application



Rain Safe in 2 hours

APPLICATION GUIDE

Specific Rates

Crop Type	Dilution in Water			Application Rate				Target Yield Greater than
	Minimum		Maximum					6t/ha
Fruit Trees	250	-	800	3L	to	5L	per hectare	6L/ha
Vegetables	250	-	800	3L	to	5L	per hectare	6L/ha
Grapes	250	-	800	3L	to	5L	per hectare	6L/ha
Tubers	250	-	800	3L	to	5L	per hectare	6L/ha
Lettuce and Brassicas	250	-	800	3L	to	5L	per hectare	6L/ha
Rice	250	-	400	2L	to	4L	per hectare	5L/ha
Corn/Maize	250	-	400	2L	to	4L	per hectare	5L/ha
Wheat, Barley, and Oats	250	-	400	2L	to	4L	per hectare	5L/ha
Canola and Oil Crops	250	-	400	2L	to	4L	per hectare	5L/ha
Legumes	250	-	400	2L	to	4L	per hectare	5L/ha
Sorghum and Millets	250	-	400	2L	to	4L	per hectare	5L/ha

Recommended Timings

Crop Type	Minimum Preferred		1 week		3 wks		6 wks		10 wks		12 wks		14 wks	
			2-Leaf Stage	3-Leaf Stage	Tillering	Mid-Tillering/ Mid-Growth Stage	Root/Tuber Bulking		Flowering Stage		Early fruit set to mid fruit size/tuber half grown		Ripening Stage	
Fruit Trees	3	to 4 times		<div></div>		<div></div>		<div></div>			<div></div>			
Vegetables	3	to 4 times		<div></div>		<div></div>		<div></div>			<div></div>			
Grapes	3	to 4 times		<div></div>		<div></div>		<div></div>			<div></div>			
Tubers	3	to 4 times		<div></div>		<div></div>		<div></div>			<div></div>			
Lettuce and Brassicas	3	to 4 times		<div></div>		<div></div>		<div></div>			<div></div>			
Rice	2	to 3 times		<div></div>		<div></div>		<div></div>	<div></div>					
Corn/Maize	2	to 3 times		<div></div>		<div></div>		<div></div>	<div></div>					
Wheat, Barley, and Oats	2	to 3 times		<div></div>		<div></div>		<div></div>	<div></div>					
Canola and Oil Crops	2	to 3 times		<div></div>		<div></div>		<div></div>	<div></div>					
Legumes	2	to 3 times		<div></div>		<div></div>		<div></div>	<div></div>					
Sorghum and Millets	2	to 3 times		<div></div>		<div></div>		<div></div>	<div></div>					

HOW TO MIX



**Shake
Vigorously**



**Mix
with Water**



**Mix with
other Chemicals**



PRODUCT COMPATIBILITY + JAR TESTING

DO NOT mix with alkaline copper fungicides or inoculants. If you are unsure, we recommend a simple jar test of products. Mix together and check if reaction occurs.



PRECAUTIONS

Non-toxic product. Avoid unneeded contact. Keep out of the reach of children. If contact is made with eyes, immediately rinse with plenty of water. If swallowed, seek medical attention.

ANALYSIS AND PRODUCT ASSURANCE

RLF

Australian-owned Formulator, Manufacturer and Supplier of High-analysis Broad-spectrum Liquid Fertiliser technologies. For over 25 years RLF's products have been used by millions of farmers and growers world-wide. ISO 9001 Quality Assured Company since 1998.



MACRO NUTRIENTS

Nitrogen (N)
Phosphorus (P)
Phosphorus (P_2O_5)
Potassium (K)
Potassium (K_2O)
Magnesium (Mg)
Sulphur (S)

MICRO NUTRIENTS

Zinc (Zn)
Manganese (Mn)
Copper (Cu)
Iron (Fe)
Boron (B)
Cobalt (Co)
Molybdenum (Mo)

GLOBAL

%w/w
%w/w
%w/w
%w/w
%w/w
%w/w
%w/w

%w/w
%w/w
%w/w
%w/w
%w/w
%w/w
%w/w



Member Login

Please login to be able to view this detail



Not a member yet?
[Register Here](#)

[LOG IN](#)