



RICE SEED Soak Method | Local farmer practice determines the best method of application to be used.



Soak

The **Soak method** uses 6 steps to apply BSN Seed Priming Fertiliser to the rice seed. This method is closest to common or typical farmer practice.

### STEPS

1. Soak Rice Seed
2. Drain
3. Mix BSN + Water
4. Pour BSN on Rice Seeds
5. Wait 24 hours+
6. Ready to Sow

1

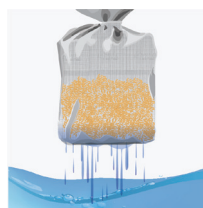


Soak

### SOAK

Soak 20kg of rice seed for 24-hours (usually rice is in a permeable bag)

2



Drain

### DRAIN

Drain the extra water

3



Mix BSN  
+ Water

### APPLY

Apply 125ml BSN Seed Priming Fertiliser to 10-litres of water and mix thoroughly (for 20kg of rice seed)

4



Uniformly  
Apply BSN

Slowly pour the mixture of water and BSN from the top of the bag. Pour the mixture uniformly and slowly, so that the whole body of rice seed gets its share of the mixture. Be certain that the mixture is not applied to one location only since it will not treat the whole seed lot uniformly

5

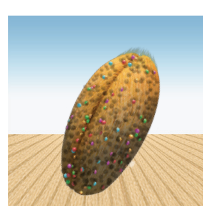


Incubate  
+24 Hours

### +24 HOURS

Incubate rice seed for a further 24-hours

6



Ready to Sow

### READY TO SOW

Sow the rice seed as per normal farmer practice

### HOW MUCH TO APPLY TO THE SEED

Seed Type	BSN SS, BSN-10, Interceptor XS ml per 1kg of seed		ml Water + Chemicals ml per 1kg of seed	Total Application ml per 1kg of seed	
Corn, cotton, sunflower, pumpkin	4 ml	+	2 ml	=	6 ml for 1kg seed
Zucchini, squash, melon, watermelon	4 ml	+	5 ml	=	9 ml for 1kg seed
Wheat, barley, triticale, oat	5-6 ml	+	3-5 ml	=	8-11 ml for 1kg seed
Rice (dry grain), safflower	5-6 ml	+	3-5 ml	=	8-11 ml for 1kg seed
Beet, cucumber, okra, coriander	6-7 ml	+	8-9 ml	=	14-16 ml for 1kg seed
Radish, turnip, Kohlrabi, parsnip, pepper	7-8 ml	+	8-9 ml	=	15-17 ml for 1kg seed
Onion, leek, chive, garlic, tomato, eggplant	8-9 ml	+	9-10 ml	=	17-19 ml for 1kg seed
Canola, carrot, lettuce, dill, chicory	10-12 ml	+	14 ml	=	24-26 ml for 1kg seed
Celery, non-fluffy grass pasture seeds	15-18 ml	+	18-20 ml	=	33-38 ml for 1kg seed
Fluffy grass pasture seeds	30 ml	+	33 ml	=	63 ml for 1kg seed

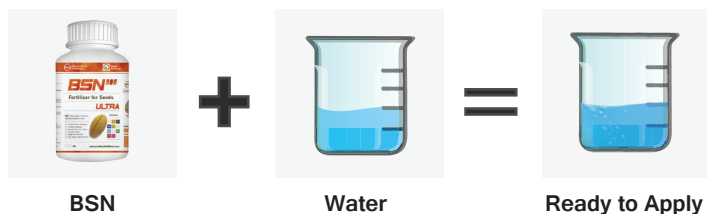
  

Seed Type	BSN Ultra + BSN Hybrid ml per 1kg of seed		Water & Pesticide ml per 1kg of seed	Total Application ml per 1kg of seed	
Corn	4 ml	+	2 ml	=	6 ml for 1kg seed
Rice (dry grain)	5-6 ml	+	5-6 ml	=	10-12 ml for 1kg seed
Lucerne (Alfalfa)	10 ml	+	2 ml	=	12 ml for 1kg seed

### HOW TO MIX BSN

#### First Mix with Water

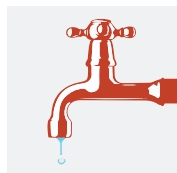
BSN Seed Primer must first be mixed with water. Taking care with the water rates greatly assists the absorption process and provides for optimum delivery of nutrient to the seed. The water rates required for each seed type is given in the next section of this document.



#### Mixing with Other Chemicals



**Shake  
Vigorously**



**Mix with  
Water**



**Mix with other  
Chemicals**



BSN Seed Primer can be mixed with a wide range of other chemicals.

But caution must be exercised. Always apply **BSN** first, or mix water and **BSN** before adding chemicals. It is recommended that a simple jar test be carried out if you are unsure of product compatibility by mixing together and checking if a reaction occurs.

Do not mix with alkaline copper fungicides or inoculates.

You can also check at [www.rlfchemtest.com](http://www.rlfchemtest.com)